



ABOUT THIS HOME.....

IF YOU ARE LOOKING FOR A LIGHT AND AIRY 2 BEDROOM GROUND FLOOR APARTMENT CLOSE TO AMENITIES AND WITHIN WALKING DISTANCE TO A STATION THEN LOOK NO FURTHER. THE PROPERTY IS CONVENIENTLY LOCATED ADJACENT TO A SMALL PARADE OF SHOPS AND AROUND 19 MINUTES ON FOOT TO ELTHAM STATION WITH TRAINS INTO CHARING CROSS AND VICTORIA IN AROUND HALF AN HOUR. IF YOU LIKE OPEN GREEN SPACES THEN YOU CAN STROLL A FEW MINUTES TO THE 32 ACRE ELTHAM COMMON FOR A WALK, JOG OR PERHAPS JUST SOMEWHERE TO SIT AND ENJOY A PICNIC. THE PROPERTY ALSO BENEFITS FROM ITS OWN EASTERLY FACING BALCONY WHICH IS THE PERFECT PLACE TO ENJOY A MORNING COFFEE AND WATCH THE HUSTLE AND BUSTLE. WE EXPECT A LOT OF INTEREST IN THIS WELL PRESENTED HOME SO RECOMMEND AN EARLY VIEWING TO AVOID DISAPPOINTMENT.

THE LOCATION.....

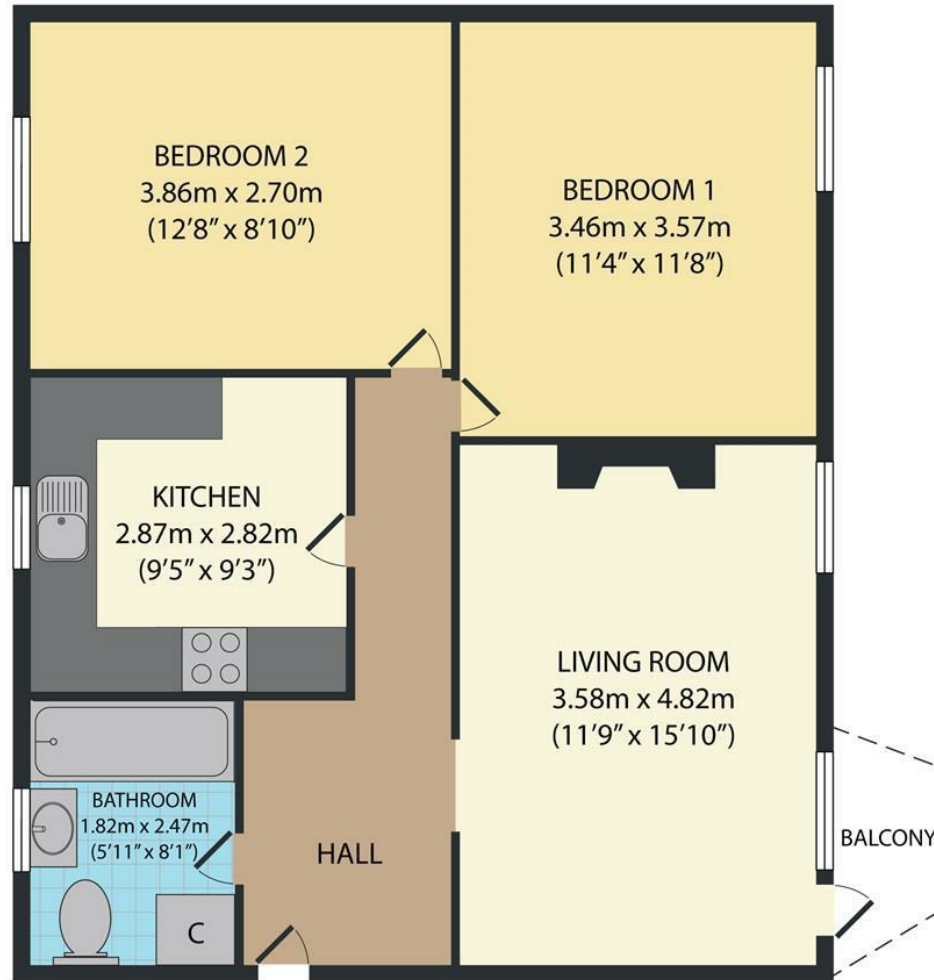
ELTHAM IS LOCATED IN THE ROYAL BOROUGH OF GREENWICH, AROUND 3 MILES TO THE EAST OF BLACKHEATH VILLAGE AND AROUND 3.4 MILES TO THE SOUTH OF GREENWICH TOWN-CENTRE. THERE IS PLENTY TO DO IN THE VICINITY WITH ELTHAM PALACE, FORMER HOME OF KING HENRY VIII AROUND 1.5 MILES AWAY. IT IS DESCRIBED BY ENGLISH HERITAGE AS ONE OF LONDON'S BEST-KEPT SECRETS, BOASTING 19 ACRES OF AWARD-WINNING GARDENS. SEVERNDROOG CASTLE IS AROUND 0.6 MILES AWAY AND OFFERS 360-DEGREE VIEWS OF THE CITY FROM THE GOTHIC TOWER. ELTHAM COMMON IS JUST A 3 MINUTE WALK AWAY AND THE IDEAL PLACE TO TAKE THE KIDS OR DOG TO BURN OFF SOME ENERGY. KEEN GOLFERS CAN ENJOY THE PRIVATE MEMBERS-ONLY ROYAL BLACKHEATH GOLF CLUB JUST 9 MINUTES (1.8 MILES) AWAY BY CAR OR ELTHAM WARREN GOLF CLUB - ONE OF ENGLAND'S OLDEST 9-HOLE COURSES IS JUST 8 MINUTES AWAY (1.7 MILES) BY CAR. ELTHAM HIGH STREET AND WESTMOUNT ROAD BOAST NUMEROUS CAFES, RESTAURANTS, AND INDEPENDENT SHOPS. YOUR YOUNG ONES' EDUCATIONAL NEEDS ARE WELL SERVED WITH RANGE OF GOOD AND OUTSTANDING SCHOOLS WITHIN 1 MILE. COMMUTERS WILL ENJOY THE SHORT 19-MINUTE (0.9 MILES) WALK TO ELTHAM TRAIN STATION WHICH HAS FREQUENT SERVICES TO LONDON CHARING CROSS AND LONDON VICTORIA IN AROUND 30 MINUTES.











Total area : approx. 61.41 sq. meters (661 sq. feet)

This floor plan is for illustrative purposes and layout guidance only. It is not drawn to scale. Dimensions should not be used for carpet or flooring sizes and are not intended to form part of any contract.

These particulars do not constitute part or all of an offer or contract | The measurements indicated are supplied for guidance only | We have not tested any apparatus, equipment, fixtures, fittings or service, and it is in the buyers interest to check the working condition of any appliances | We have not sought to verify the legal title of the property and the buyers must obtain verification from their solicitor

